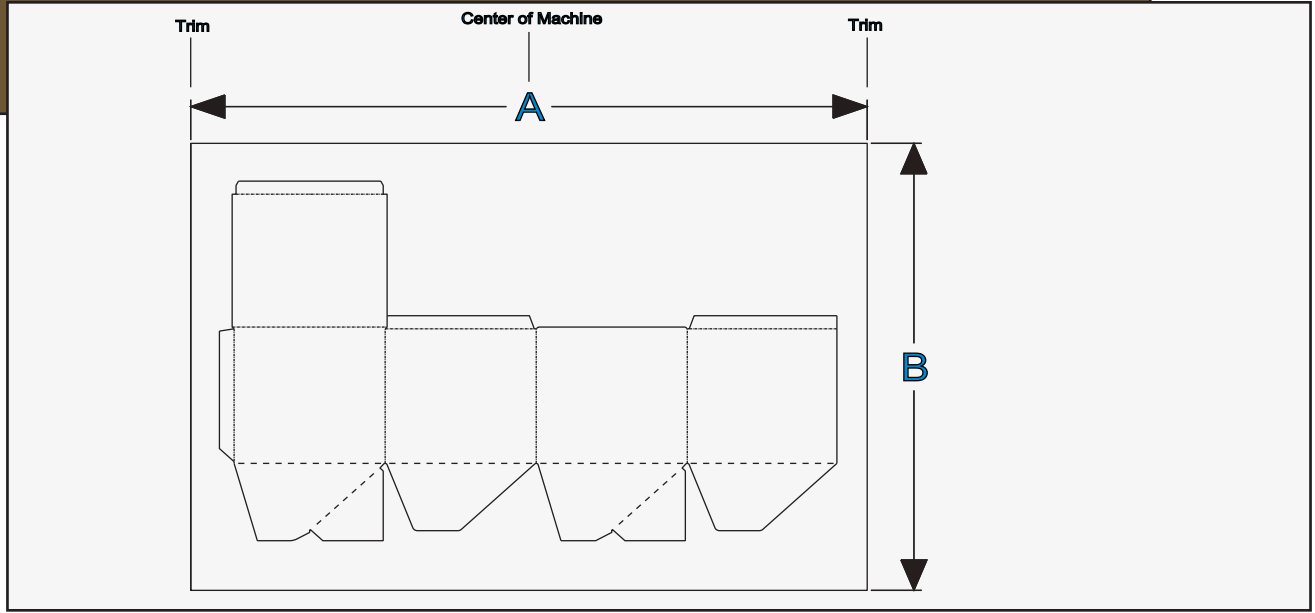


Cumberland Container Corporation

STALEY ROTARY DIE CUTTER 66" X 85"

2 color printer



SHEET AND PANEL SIZES WITH 1/4 " OR 3/8 " SLOTTED BLADES

NAME	DIMENSION	MINIMUM	MAXIMUM
Rotary Die Circumference		66"	66"
Finished Blank(across mach.)	A	18"	82"
Sheet Width(regular feed thru mach.)	B	16"	62"
Sheet Width (skip feed)	B	16"	67"
Print Colors			2 color
Print Surface Length	A		76"

Note: Production parameters may effect maximum specifications. All dimensions and measurements are based on the subsequent machine configuration: Feed section , 2 print sections , inline die cutter , slotter , folder gluer , and counter ejector. Overall machine dimensions will vary, depending on configuration.

Dimensions are approximate . Cumberland Container reserves the right to change specifications without notice . Productivity , accuracy , tolerance , and similar statements are descriptive without guarantee.

Dimensions pertain only to Cumberland Container original equipment . Additions of any third party equipment may effect the maximum and minimum dimensions stated herein. Contact Cumberland Container Corporation for information on other configurations.



Cumberland
CONTAINER
PACKAGING BEYOND THE BOX

1027 N. CHESTNUT
MONTEREY TN. 38574

PHONE 931-839-2227
FAX 931-839-3971
sales@cumberlandcontainer.com
www.cumberlandcontainer.com