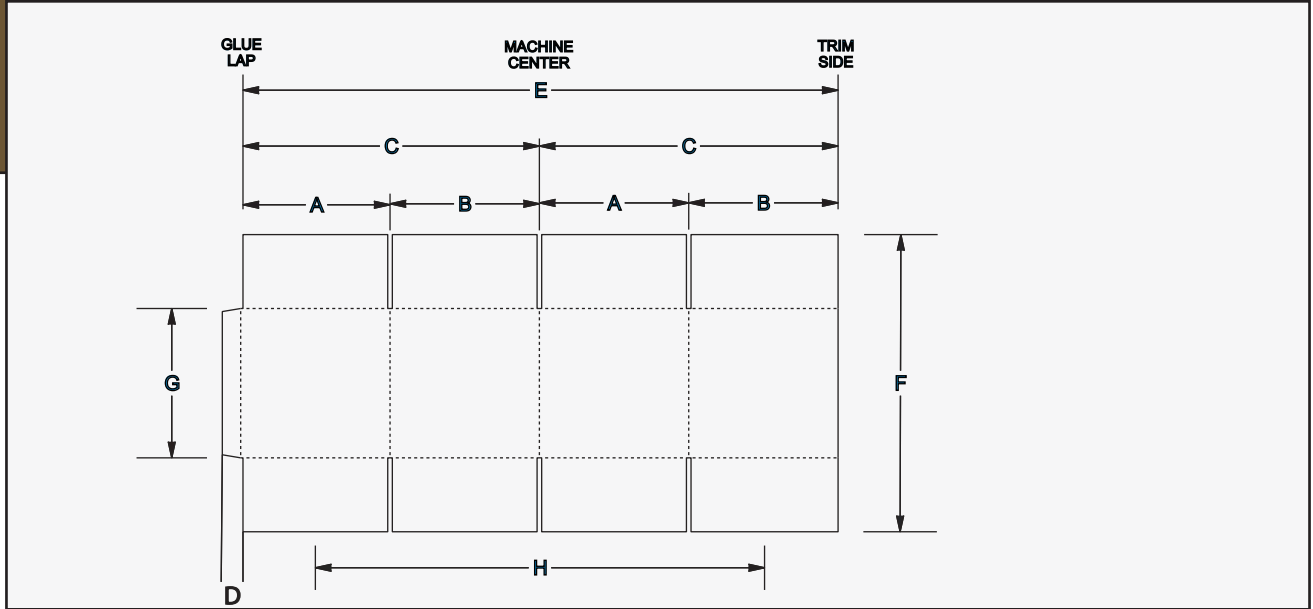


Cumberland Container Corporation

SIMON-REVCO FLEXO FOLDER GLUER
 (BIG MAC) 86" / 105" X 204" 1 Color Printer



SHEET AND PANEL SIZES WITH 1/4 " OR 3/8 " SLOTTOR BLADES

NAME	DIMENSION	MINIMUM	MAXIMUM
Small Panel	A	10"	88"
Large Panel	B	10"	88"
Two Panels	C	20"	98"
Glue Lap Width	D	2"	4"
Finished Blank(+glue lap across mach.)	E	80"	200"
Sheet Width(regular feed thru mach.)	F	29"	85"
Sheet Width (skip feed)	F	29"	94"
Glue Lap Length	G	8"	77"
Print Surface Length	H		200"
	Folded Box	Square Box	Print Colors
Minimum	29" x 20"	20"	
Maximum	94" x 98"	49"	1 COLOR

Note: Production parameters may effect maximum specifications. All dimensions and measurements are based on the subsequent machine configuration: Feed section , 2 print sections , inline die cutter , slotter , folder gluer , and counter ejector. Overall machine dimensions will vary, depending on configuration.

Dimensions are approximate . Cumberland Container reserves the right to change specifications without notice . Productivity , accuracy , tolerance , and similar statements are descriptive without guarantee.

Dimensions pertain only to Cumberland Container original equipment . Additions of any third party equipment may effect the maximum and minimum dimensions stated herein. Contact Cumberland Container Corporation for information on other configurations.



1027 N. CHESTNUT
 MONTEREY TN. 38574

PHONE 931-839-2227
 FAX 931-839-3971
 sales@cumberlandcontainer.com
 www.cumberlandcontainer.com