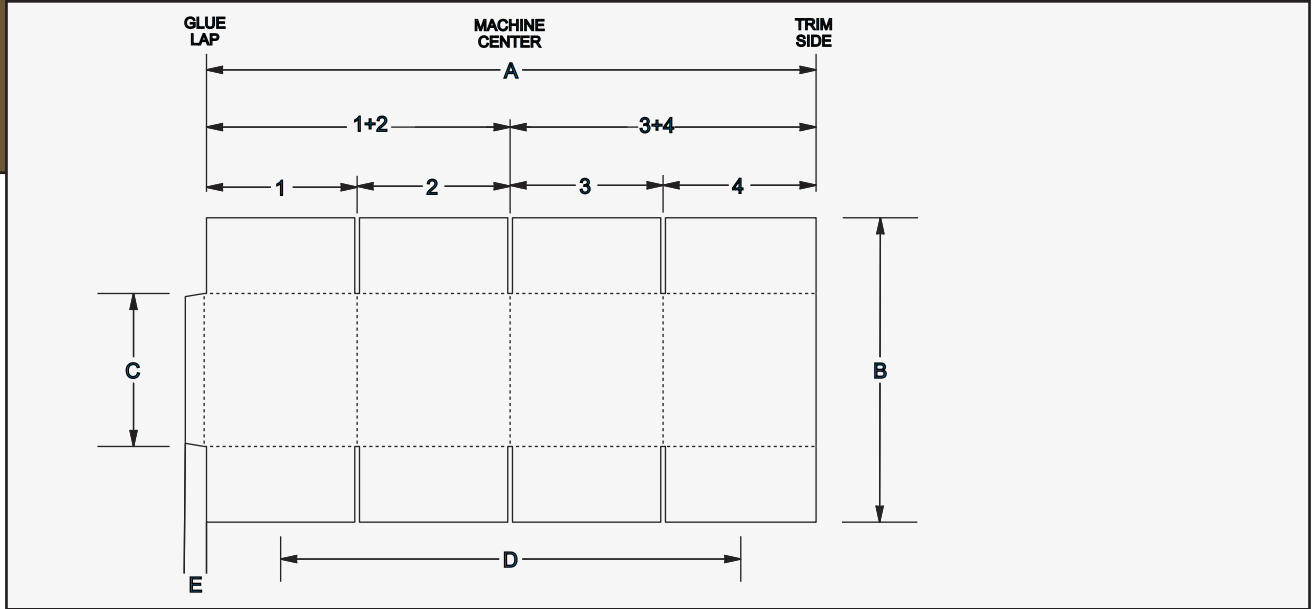


Cumberland Container Corporation

EMBA 66 X 190

2 COLOR INLINE DIE CUTTER



SHEET AND PANEL SIZES WITH 1/4 " OR 3/8 " SLOTTED BLADES

NAME	DIMENSION	MINIMUM	MAXIMUM
Panel 1	1	4"	94"
Panel 2	2	13"	
Panel 3	3	12"	
Panel 4	4	TRIM	94"
Two Panels 1+2	1+2	15.5 "	
Two Panels 3+4	3+4	15.5 "	
Glue Lap Width	E	2"	2.75"
Finished Blank(+glue lap across mach.)	A		188"
Sheet Width(regular feed thru mach.)	B	20" FLAT STOCK	63"
Sheet Width (skip feed)	B	20" FLAT STOCK	78"
BC Width	B (DW)		
Glue Lap Length	C		BOX SIZE
Print Surface Length	D		188"
	Folded Box	Square Box	Print Colors
Minimum	31"	31"	2
Maximum			

Note: Production parameters may effect maximum specifications. All dimensions and measurements are based on the subsequent machine configuration: Feed section, 2 print sections, inline die cutter, slotter, folder gluer, and counter ejector. Overall machine dimensions will vary, depending on configuration.

Dimensions are approximate. Cumberland Container reserves the right to change specifications without notice. Productivity, accuracy, tolerance, and similar statements are descriptive without guarantee.

Dimensions pertain only to Cumberland Container original equipment. Additions of any third party equipment may effect the maximum and minimum dimensions stated herein. Contact Cumberland Container Corporation for information on other configurations.



1027 N. CHESTNUT
MONTEREY TN. 38574

PHONE 931-839-2227

FAX 931-839-3971

sales@cumberlandcontainer.com

www.cumberlandcontainer.com