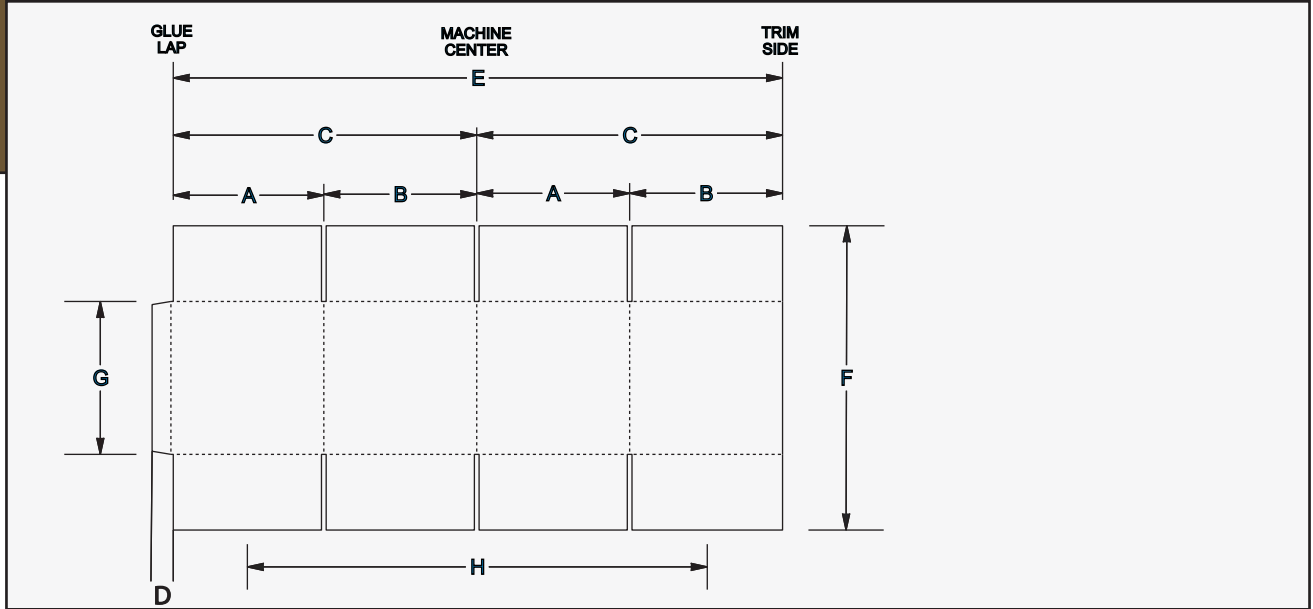


# Cumberland Container Corporation

LANGSTON BIGFOOT 64" X 144"

2 Color Printer



## SHEET AND PANEL SIZES WITH 1/4 " OR 3/8 " SLOTTER BLADES

NAME	DIMENSION	MINIMUM	MAXIMUM
Small Panel	A	3.6875"	63.3125"
Large Panel	B	6.6875"	66.3125"
Two Panels	C	10.375"	70"
Glue Lap Width	D		2"
Finished Blank(+glue lap across mach.)	E	20"	142"
Sheet Width(regular feed thru mach.)	F	18"	64"
Sheet Width (skip feed)	F	18"	77"
Glue Lap Length	G	4"	57"
Print Surface Length	H		142"
	Folded Box	Square Box	Print Colors
Minimum	20" X 10.375"	6.6875"	
Maximum	77" X 70"	35"	2 COLOR

Note: Production parameters may effect maximum specifications. All dimensions and measurements are based on the subsequent machine configuration: Feed section , 2 print sections , inline die cutter , slotter , folder gluer , and counter ejector. Overall machine dimensions will vary, depending on configuration.

Dimensions are approximate . Cumberland Container reserves the right to change specifications without notice . Productivity , accuracy , tolerance , and similar statements are descriptive without guarantee.

Dimensions pertain only to Cumberland Container original equipment . Additions of any third party equipment may effect the maximum and minimum dimensions stated herein. Contact Cumberland Container Corporation for information on other configurations.



1027 N. CHESTNUT  
MONTEREY TN. 38574

PHONE 931-839-2227  
FAX 931-839-3971  
sales@cumberlandcontainer.com  
www.cumberlandcontainer.com